

# AND8413/D

Former Catalyst Document Number AN7



ON Semiconductor®

<http://onsemi.com>

## Programmable Analog Functions

*Abstract: Analog circuits are made programmable by using digitally programmable potentiometers (DPPs™) to vary the key circuit parameters. This application note provides the analog design engineer with basic reference designs and circuit ideas for controlling the key parameters of analog circuits using digitally programmable potentiometers connected to a computer bus or microcontroller.*

Bringing Digital to the Analog World  
Programmable Voltage Amplifier  
Programmable Instrumentation Amplifier  
Programmable Dual-Gain Amplifiers  
Programmable Square Wave Oscillator (555)  
Programmable Duty Cycle  
Programmable Bandpass Filter  
Programmable Voltage Regulator  
Programmable Current Source/Sink  
Programmable Schmitt Triggers  
Programmable Transimpedance Amplifier

### BRINGING DIGITAL TO THE ANALOG WORLD

The potentiometer is a three-terminal, variable, resistive divider analog device. It is used primarily to control, regulate, or adjust a characteristic or parameter of an analog circuit. The changing of the potentiometer's wiper's position along the resistive divider provides the variability in a circuit. As opposed to the mechanical potentiometer where the control of the mechanical potentiometer's wiper is physical, the control of the electronic potentiometer's wiper is digital. The digital control signals of the electronic potentiometer are commonly connected to a computer bus where the computer's power of high speed programming, control, and computation are brought to bear in the analog circuit. The potentiometer varies an analog function; digital signals vary the potentiometer; thus, computer generated digital signals vary the analog function. Figure 1 illustrates the concept of computerizing an analog function in block diagram form. Any analog circuit whose parameters depend on a resistance is a candidate for application of a digitally programmable potentiometer. The potentiometer can be configured as a two-terminal variable resistance or a

### APPLICATION NOTE

three-terminal resistance divider and is used to control voltage, current, resistance, inductance, capacitance, power, frequency, time, duty cycle, gain, Q, bandwidth, etc. The mixed signal DPP provides the design engineer with a superior analog component that is digitally controlled, programmable, flexible, small size, and low weight. The DPP provides the manufacturing engineer with a cost effective component that has a short programming time, is reliable, compatible with automated assembly test techniques, and has low field service costs.

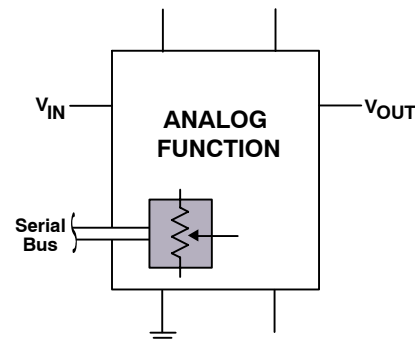


Figure 1. Programmable Analog Functions

The number of basic functions in the analog domain are limited; they are amplification, oscillation, regulation, filtering, and conversion and the circuits which implement these functions are amplifiers, oscillators, regulators, filters, and converters. The most important of these circuits is, of course, the amplifier. These fundamental circuits are the basic building blocks in analog systems. Typical examples of each of these circuits will illustrate the computerization of the analog functions. Hence, they become programmable analog circuits. While the number of basic analog circuits are limited, they are repeatedly and uniquely used as building blocks to implement more advanced analog functions at the system or end product level. The designs feature the use of the 32-tap CAT5114 and CAT5112 DPPs with an increment/decrement interface in single supply applications.

**PROGRAMMABLE VOLTAGE AMPLIFIER**

The circuit in Figure 2 is a noninverting, single-supply, voltage amplifier circuit whose voltage gain is programmed using a digitally programmable potentiometer. The voltage gain is established by a traditional noninverting operational amplifier circuit and the circuit's lower cutoff frequency is established by a first-order, R<sub>3</sub>C low pass filter implementing the bias network. Variability through the movement of the wiper and programmability through the pot's instruction set are added to the circuit by the ON Semiconductor digitally programmable potentiometer (DPP).

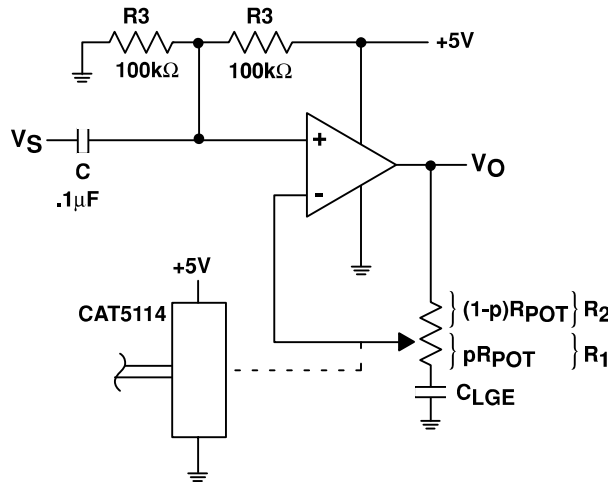
The ac voltage gain for the circuit has the form of

$$\frac{V_o}{V_s} = \frac{G_o j\omega}{j\omega + \omega_c}$$

G<sub>0</sub> is the programmable closed-loop passband gain

$$G_o = 1 + \frac{R_2}{R_1} = 1 + \frac{(1-p)R_{POT}}{pR_{POT}} = \frac{1}{p} \quad \begin{matrix} 0 \leq p \leq 1, \\ 1 \leq G \leq 31 \end{matrix}$$

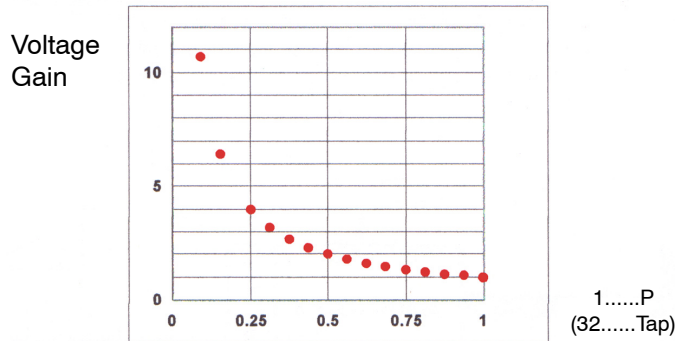
where p reflects the proportionate position of the wiper from one end of the pot (0) to the other end of the pot (1). The gain versus p or wiper position, shown in Figure 3, is logarithmic-like and is programmable from 1 to 31 for a 32-tap pot. The gain of this noninverting amplifier is relatively stable with respect to temperature because the gain depends



**Figure 2. Programmable Voltage Amplifier**

on the wiper position and not R<sub>POT</sub>. The temperature dependence of R<sub>POT</sub> is relatively high and is not guaranteed. The amplifier's lower cutoff frequency f<sub>c</sub> is established by the input R<sub>3</sub>-C network:

$$f_c = \frac{\omega_c}{2\pi} = \frac{1}{2\pi(R_3/2)C} = 32 \text{ Hz}$$



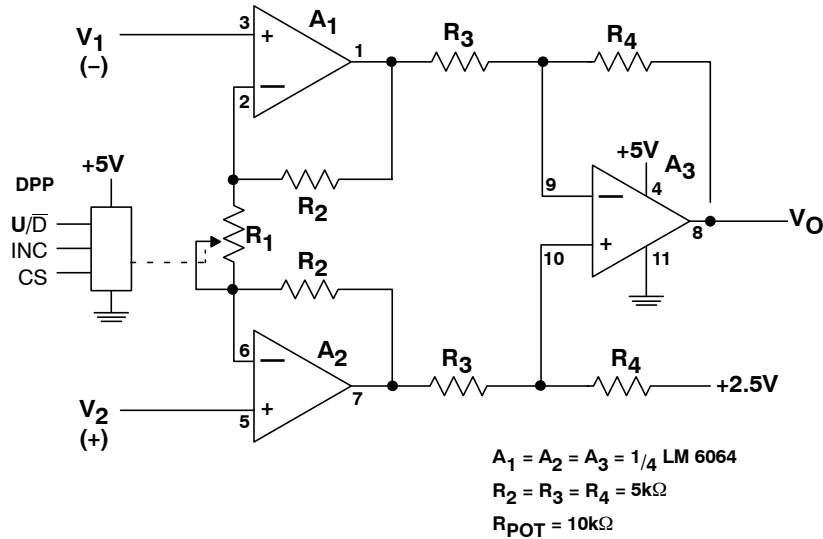
**Figure 3. Gain versus Wiper Setting**

**PROGRAMMABLE INSTRUMENTATION AMPLIFIER**

The circuit in Figure 4 is a three-amplifier implementation of an instrumentation amplifier in a single-supply circuit. The implementation, in essence, consists of two noninverting amplifiers (A<sub>1</sub> and A<sub>2</sub>) and a differential amplifier (A<sub>3</sub>). The voltage gain of the circuit is programmed by a digitally programmed potentiometer (DPP) R<sub>1</sub> and is given as

$$\frac{V_o}{V_2 - V_1} = 1 + \frac{10 \text{ k}\Omega}{R_1}$$

R<sub>1</sub> is configured as a variable resistance. The practical gain for the amplifier with a 32 tap DPP varies from 2 to about 25. For higher resolution and higher gain applications, the 100 tap version of the DPP should be used.



**Figure 4. Programmable Instrumentation Amplifier**

The instrumentation amplifier is ideally suited for bridge, sensor, and data acquisition amplifier applications where high gain, high common mode rejection ratio and high input resistance are required.

**PROGRAMMABLE DUAL-GAIN AMPLIFIERS**

The circuit in Figure 5 is an inverting amplifier and, for a given potentiometer setting, has two values of gain; one for positive input voltages (V<sub>O1</sub>/V<sub>S</sub>) and the other for negative input voltages (V<sub>O2</sub>/V<sub>S</sub>). The steering diodes D<sub>1</sub> and D<sub>2</sub> of this circuit establish the polarity of the output voltages and select the gain channel. For single supply circuits, the use of Schottky diodes extends the useable output voltage range. The diodes are within the closed loop and do not impact the value of the gain. The circuit gains in terms of the programming of the digitally programmable potentiometer DPP1 are

$$\frac{V_{O1}}{V_S} = G_1 = - \frac{(1 - p)R_{POT}}{R} \text{ for } V_S > 0$$

and

$$\frac{V_{O2}}{V_S} = G_2 = - \frac{(p)R_{POT}}{R} \text{ for } V_S < 0$$

where p varies from 0 to 1 and represents the relative pot setting and R<sub>POT</sub> represents the end to end resistance. For the values shown in the schematic of this single supply circuit, the gains are individually programmable from 0 to -10. They are however complementary, i.e., their sum equals -10.

The transfer characteristic (V<sub>O</sub> versus V<sub>S</sub>) in Figure 6 illustrates graphically the programmable dual-gain aspect of the circuit. Figure 7 shows another version of the dual gain amplifier. This version uses a second potentiometer and provides independent values of gain for each polarity of the input voltage.

## AND8413/D

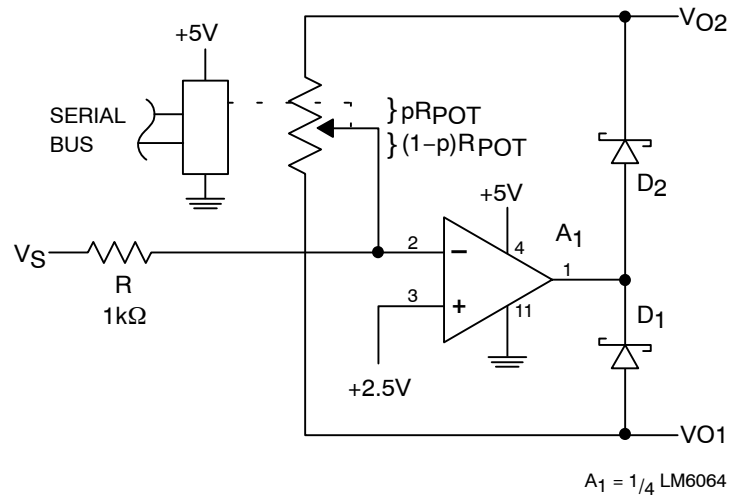


Figure 5. Dual Gain Amplifier

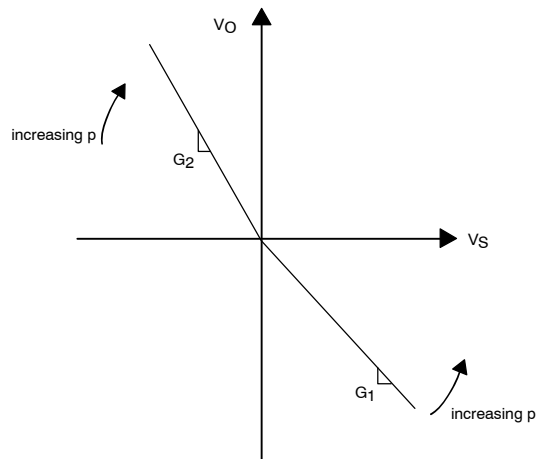


Figure 6. Transfer Characteristic

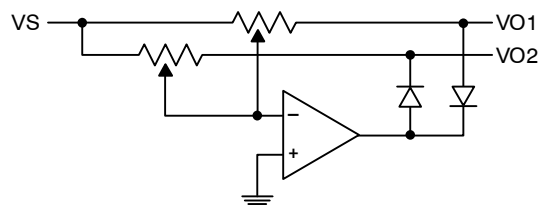


Figure 7. Dual Independent Gain Amplifier

### PROGRAMMABLE SQUARE WAVE OSCILLATOR (555)

The circuit in Figure 8 is a square wave oscillator with programmable control of frequency ( $f_{OSC}$ ) and duty cycle (DC). The circuit uses the ubiquitous 555 timer IC connected in the astable mode and ON Semiconductor's CAT5114 digitally programmable potentiometer (DPP). For this traditional configuration, resistances  $R_A$  and  $R_B$  and

capacitor  $C$  establish the frequency of oscillation and duty cycle. They are given as

$$f_{OSC} = \frac{1.44}{(R_A + 2R_B)C}, \quad DC = \frac{R_A + R_B}{R_A + 2R_B}$$

If  $R_A$  and  $R_B$  are replaced by  $R_1$ ,  $R_2$ , and the potentiometer resistances  $pR_{POT}$  (wiper resistance to one end) and  $(1-p)R_{POT}$  (wiper resistance to the other end),

$$DC = \frac{R_1 + R_2 + R_{POT}}{R_1 + 2R_2 + R_{POT}(2 - P)}$$

The factor  $p$  is a dimensionless number that reflects the relative position of the wiper from one end (0) of the potentiometer to the other end (1) and  $R_{POT}$  is the pot's end-to-end resistance. The role of resistors  $R_1$  and  $R_2$  is to control the range over which the frequency and duty cycle can be adjusted. The larger  $R_1$  and  $R_2$  are relative to the  $R_{POT}$ , the greater the 'effective' resolution but the narrower the range of adjustment. The greatest range of adjustment occurs for  $R_1 = R_2 = 0$ . For this case,

$$f_{OSC} = \frac{1.44}{R_{POT}(2 - p)C}, \quad DC = \frac{1}{(2 - p)}$$

For  $R_1 = R_2 = 0$ ,  $R_{POT} = 10 \text{ k}\Omega$ , and  $C = 0.01 \text{ }\mu\text{F}$ ,

$$7.20 \text{ kHz} \leq f_{OSC} \leq 14.4 \text{ kHz} \text{ and } 0.5 \leq DC \leq 1.$$

The nominal value of  $f_{OSC}$  is 10.8 kHz with about a  $\pm 33\%$  adjustment range. The duty cycle is fully adjustable.

If  $R_1 = R_2 = R_{POT} = 10 \text{ k}\Omega$  and  $C = 0.003 \text{ }\mu\text{F}$ ,

$$9.66 \text{ kHz} \leq f_{OSC} \leq 12.0 \text{ kHz} \text{ and } 0.6 \leq DC \leq 0.75$$

The nominal value of  $f_{OSC}$  is again 10.8 kHz but with a  $\pm 20\%$  adjustment range. The adjustment of the duty cycle is limited in this case from 0.6 to 0.75. The desired programming resolution for frequency of oscillation and duty cycle can be achieved either through the potentiometer's number of taps (programming steps) or the use of  $R_1$  and  $R_2$ .

The circuit uses ON Semiconductor's CAT5114 32-tap digitally programmable potentiometer (DPP). This circuit can be used as a general purpose, programmable oscillator or the oscillator circuit with its simple, asynchronous increment/decrement interface can be used as a building block in real time, closed-loop feedback type applications.

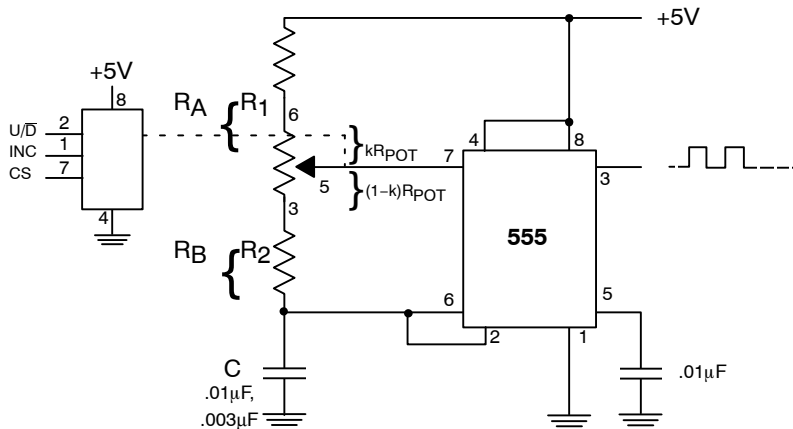


Figure 8. Dual Independent Gain Amplifier

**PROGRAMMABLE DUTY CYCLE**

The circuit in Figure 9 is a modification of the traditional one-comparator implementation of a square wave oscillator. The positive feedback network establishes the upper (+3.75 V) and lower voltage (+1.25 V) limits for the comparator while the negative feedback network provides a rising and falling exponential waveform. The digitally programmable potentiometer  $DPP_1$  and the steering diodes  $D_1$  and  $D_2$  establish independent charge and discharge paths for the capacitor  $C$ . Hence,

$$T_{disch} = pR_{POT} C \ln 3$$

$$T_{charge} = (1 - p)R_{POT} C \ln 3$$

where  $p$  represents the pot's relative (0-1) wiper setting and  $R_{POT}$  represents the pot's end to end resistance. The pot setting programs the duty cycle for the output signal. The total period of the square wave oscillator ( $T_{disch} + T_{charge}$ ) output is

$$T = R_{POT} C \ln 3$$

The oscillator's period, and thus frequency, is constant. For the values shown, the frequency is 910 Hz and the duty cycle can be varied from less than 15% to more than 92%.

## AND8413/D

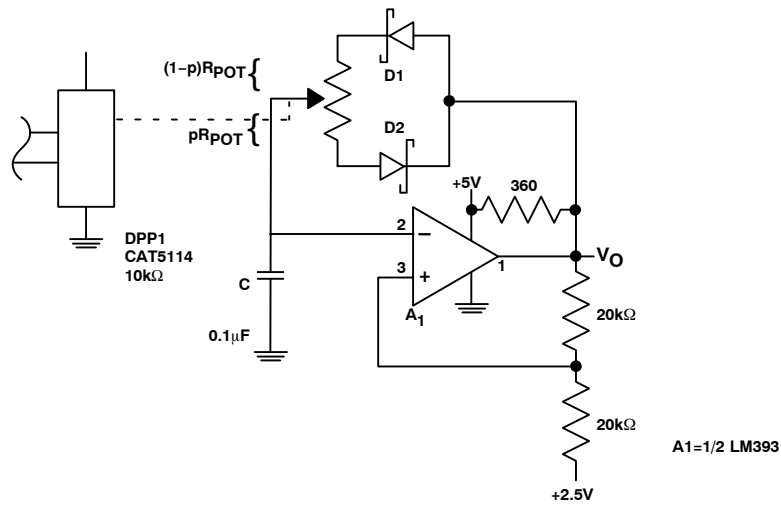


Figure 9. Programmable Duty Cycle

### PROGRAMMABLE BANDPASS FILTER

The circuit in Figure 10 is a second-order, bandpass filter whose center frequency is varied using a digitally programmable potentiometer (DPP). The filter is a member of the Infinite Gain Multiple Feedback (IGMF) class which is characterized by a fixed five-component (three  $R_S$  and two  $C_S$ ) configuration. The three key parameters for the bandpass filter are characteristic or center frequency  $\omega_0$ , passband gain  $A_0$ , and the figure of merit  $Q$ . The gain expression or transfer function for the circuit is

$$\frac{V_O}{V_S} = \frac{-s/R_1C}{s^2 + (2/R_3C)s + (R_1 + R_3)/R_1R_2R_3C^2}$$

$$= \frac{A_0s(\omega_0/Q)}{s^2 + s(\omega_0/Q) + \omega_0^2}$$

where

$$f_0 = \frac{1}{2\pi C} \sqrt{\frac{(R_1 + R_2)}{R_1R_2R_3}} = \frac{1}{2\pi C} \sqrt{\frac{(R_1 + pR_{POT})}{R_1pR_{POT}R_3}}$$

$$A_0 = -\frac{R_3}{2R_1}$$

$$Q = \frac{1}{2} \sqrt{\frac{(R_1 + R_2)R_3}{R_1R_2R_3}} = \frac{1}{2} \sqrt{\frac{(R_1 + pR_{POT})R_3}{R_1pR_{POT}R_3}}$$

$$BW = \frac{f_0}{Q} = \frac{1}{\pi R_3 C}$$

The relative position of the wiper is mathematically modeled as a dimensionless number  $p$  and varies from 0 (one end of the pot) to 1 (the other end of the pot). A useable range for  $p$  in this application is from 0.05 to 1.0.

$R_2$  is independent of gain ( $A_0$ ) and bandwidth ( $BW$ ) and can be used to independently vary the center frequency  $f_0$  (and  $Q$ ). Using digitally programmable potentiometers (DPPs) to vary key parameters in filters (and other analog circuits) saves the cost of using expensive, precision resistors and capacitors to guarantee a circuit's performance. ON Semiconductor's CAT5114 potentiometer has a increment/decrement asynchronous interface which lends itself to closed-loop, feedback type applications. For example, the center frequency of the tunable bandpass filter could be varied in a closed loop configuration to match the frequency of an incoming sinusoidal signal in a signal processing system.

For the circuit values shown, the passband gain is minus one, the bandwidth is 3.2 kHz, and the center frequency can be varied from 5.5 kHz to 22 kHz. For the wiper set half way,  $p = 0.5$ , the filter's center frequency is 7.5 kHz.

## AND8413/D

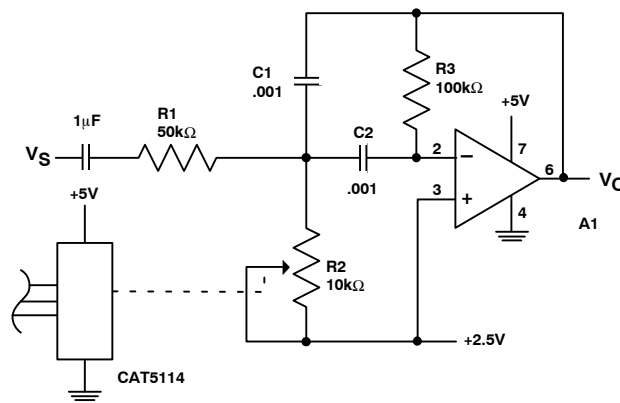


Figure 10. Programmable Bandpass Filter

### PROGRAMMABLE VOLTAGE REGULATOR

In mixed signal systems, the compatibility of the voltages of the analog, digital, and mixed signal devices can be an issue when they meet in the same circuit. For example, the LP2952 in Figure 11 is one of a series of voltage regulators designed for analog output voltages from 1.2 V to 30 V. The regulator also has digital controls in the form of an input digital signal for shutting down to conserve power and an output digital signal indicating an output undervoltage condition. The digitizing of the voltage regulator in a processor based system can be completed by programming the output voltage using the mixed signal, digitally programmable potentiometer (DPP). The DPP brings variability to the regulator output voltage through its analog potentiometer and programmability through its digital control signals and serial bus. With the 2952 type regulator, system designers can use the basic device to provide voltage regulation and use digital signals to address power and low voltage concerns and program the output voltage. One problem is most digitally programmable potentiometers are designed for +5 V or  $\pm 5$  V analog systems. This problem can be overcome by placing the variable resistance of the

DPP in the ground leg of the regulator's programming resistors,  $R_1 - R_3$ , as shown in Figure 6. The voltage at the feedback (FB) pin is the regulator's internal reference of 1.235 V. The internal reference is within the 5 V limitation of the analog potentiometer which does not see the high regulator output voltage in this position. The output voltage for this circuit is given as  $V_O(\text{reg}) = 1.235 \text{ V} \{1 + R_1 / (R_2 + R_3)\}$ .

For  $V_{IN}(\text{unreg})$  of 15 V, the regulator output voltage of Figure 6 will vary from 2.5 V to 13.5 V. Discrete resistors  $R_1$  and  $R_2$  and the potentiometer's end-to-end resistance  $R_{POT}$  are used to control the range over which the potentiometer will program the output voltage. These resistors and the number of taps of the DPP are used to define the resolution. The digitally programmable potentiometer shown in ON Semiconductor's low cost, 32 tap CAT5114. This potentiometer has an increment/decrement interface which lends itself to a closed-loop, automated calibration procedure which saves production test time and provides additional security. The circuit can be used as a bias supply or programmable voltage source.

## AND8413/D

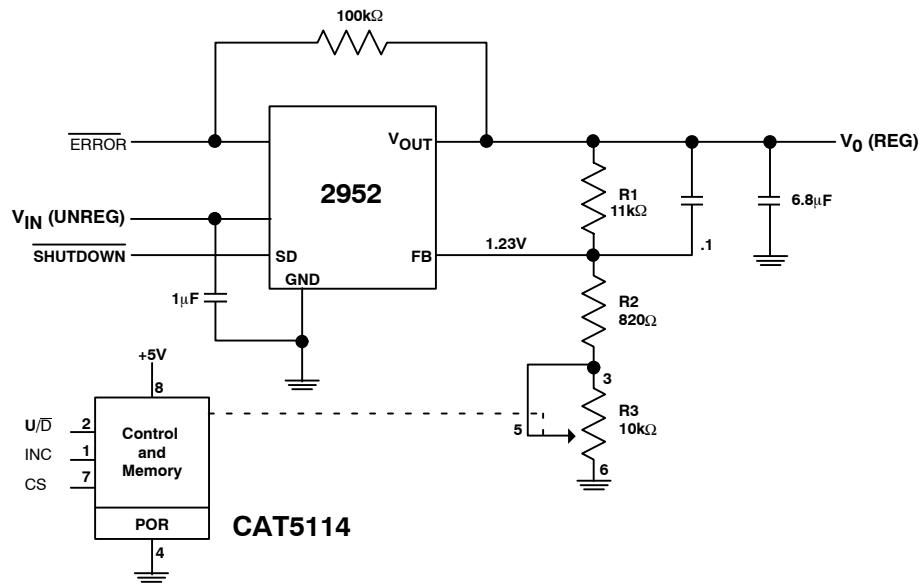


Figure 11. Programmable Voltage Regulator

### PROGRAMMABLE CURRENT SOURCE/SINK

The circuit in Figure 12 is a voltage-controlled, constant current source whose value is programmed using the ON Semiconductor 5112 digitally programmable potentiometer (DPP). The output current  $I_S = -V_S / R$  where  $V_S$  is the buffered wiper output voltage of the DPP. The circuit can either source ( $V_S < 2.50$  V) or sink current ( $V_S > 2.50$  V). The source is implemented using a

summing/differential amplifier ( $A_1$ ) and a voltage follower ( $A_2$ ). The constant voltage  $V_S$  across the constant resistor  $R$  establishes the constant current. The  $A_2$  circuit raises the output voltage of  $A_1$  by the amount of the load voltage thus maintaining a constant voltage  $V_S$  across  $R$ .

For the circuit values shown, the output current can be programmed from 0 to  $\pm 1$  mA in 64  $\mu$ A steps

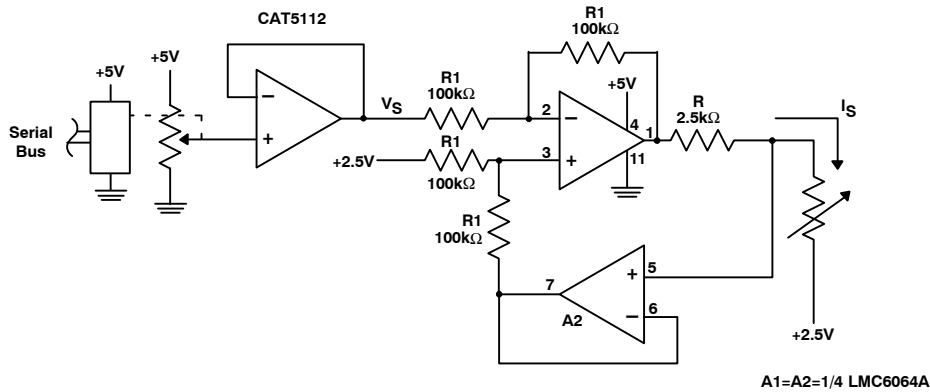


Figure 12. Programmable Current Source/Sink

### PROGRAMMABLE SCHMITT TRIGGERS

The circuit in Figure 13 is a single-supply version of a programmable Schmitt Trigger or a comparator with hysteresis. The function is implemented using a comparator  $A_1$  and a digitally programmable potentiometer (DPP). The lower ( $V_{LL}$ ) and upper ( $V_{UL}$ ) limits of the hysteresis characteristic are a function of the relative setting of the potentiometer's wiper and are given as

$$V_{LL} = (1 - p)2.5 \text{ V} \quad \text{and} \quad V_{UL} = 2.5 \text{ V} + (p)2.5 \text{ V}$$

where  $p$  is a dimensionless number from 0 to 1 and represents the potentiometer wiper's position from one end of the pot (0) to the other end (1). The characteristic's lower

limit can be programmed from 0 V to 2.5 V and the upper limit can be programmed from 2.5 V to 5 V. The circuit's transfer characteristic ( $V_O$  versus  $V_S$ ), Figure 14, illustrates the hysteresis curve and the lower and upper limits. The two limits are complementary, i.e. their values sum to 5 V, and hence are not independently programmable.

The lower and upper limits of the characteristic can be independently programmed by adding steering diodes  $D_1$  and  $D_2$  and a second potentiometer as shown in Figure 15. For this circuit,

$$V_{LL} = (1 - p_2)2.5 \text{ V} \quad \text{and} \quad V_{UL} = 2.5 \text{ V} + (p_1)2.5 \text{ V}$$



# AND8413/D

With ON Semiconductor's 32 tap DPPs, the lower limit can be programmed from 0 to 2.5 V in 81 mV increments

and the upper limit can be independently programmed from 2.5 V to 5 V with the same resolution.

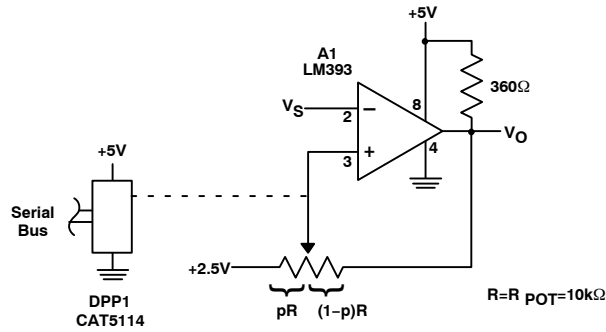


Figure 13. Programmable Schmitt Trigger

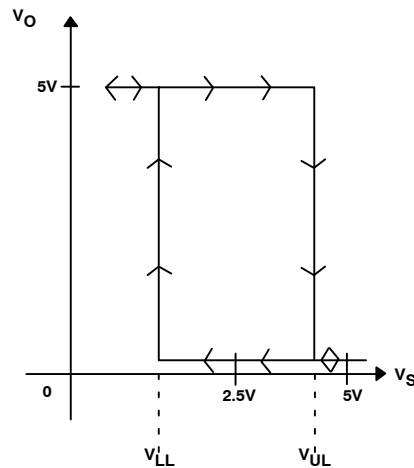


Figure 14. Transfer Characteristic

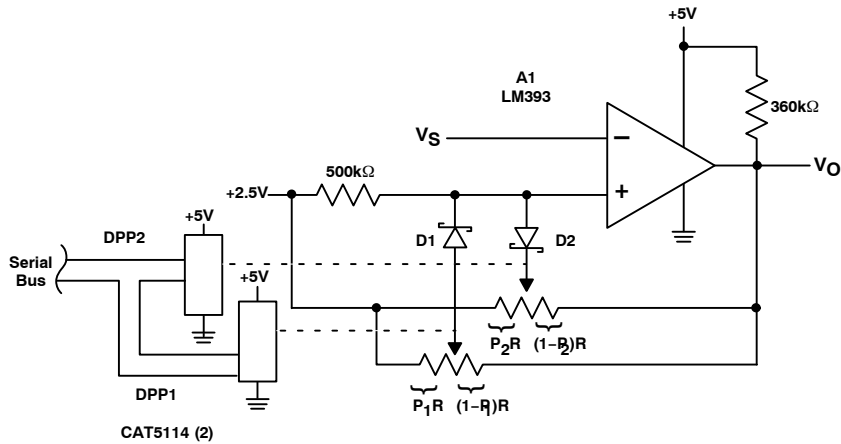


Figure 15. Schmitt Trigger with Independently Programmable Limits

**PROGRAMMABLE TRANSIMPEDANCE AMPLIFIER**

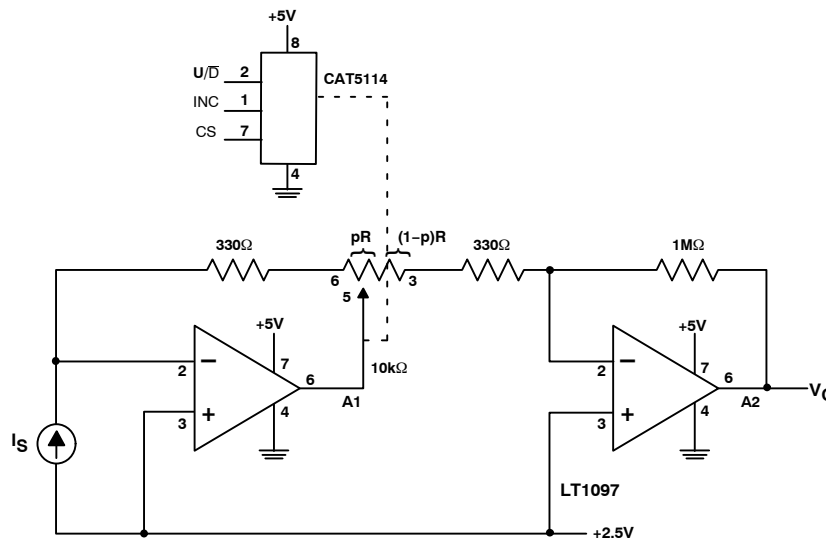
The circuit in Figure 16 is an input current (I) to output voltage (V) convertor, or transimpedance amplifier, with programmable gain. The circuit is a current to voltage convertor circuit (A<sub>1</sub>) cascaded with an inverting amplifier circuit (A<sub>2</sub>) with a common digitally programmable potentiometer (DPP) varying the gains of the two. Transducers like photodiodes and photovoltaic cells, with their high output impedance, are best modeled as current sources. Their output current is typically converted to a voltage for further signal processing.

The potentiometer resistances are modeled as pR (= pR<sub>POT</sub>) and (1-p)R where p is a number that varies from 0 to 1 and reflects the proportionate position of the wiper from one end (0) of the potentiometer to the other end (1). The programming of the location of the wiper changes the scale factor between the input current and output voltage without

changing the values of any of the resistances and avoids the use of high value resistors in measuring low values of current. For this circuit,

$$\frac{V_O}{I_s} = - (330 \Omega + pR) \frac{1 \text{ M}\Omega}{330 \Omega + (1 - p)10 \text{ k}\Omega}$$

The gain of the transimpedance amplifier ( $V_O/I_s$ ) is pseudo-logarithmic and varies from 31k $\Omega$  to 31M $\Omega$  as p is varied from 0 to 1. With these resistances, over four decades of current can be measured from less than 6 nA to over 60  $\mu$ A. The circuit uses the low cost, 32 tap ON Semiconductor CAT5114 with a increment/decrement serial interface. This simple, asynchronous interface can be computer controlled or driven by logic and lends itself to automated calibration and test-and-measurement procedures.



**Figure 16. Programmable I to V Converter**

**REFERENCES:**

1. "Op Amp Network Design" by John R. Hufault, John Wiley and Sons, New York, 1986, pp. 102, 103
2. "Operational Amplifiers" by Charles F. Wojslaw and Evangelos A. Moustakas, John Wiley and Sons, New York, 1986
3. "IC Op Amp Cookbook" by Walter G. Jung, Howard Sams, Indianapolis, 1979
4. "Operational Amplifiers" by G.B. Clayton, Butterworth Scientific, London, 1982
5. "Linear Potentiometer Implements Logarithmic Gain" by W. Stephen Woodward, EDN, October, 23, 1997
6. "PWM Circuit uses One Op Amp" by Ferran Bayes, EDN, July 6, 2000
7. "Decompensated Op Amp Gain is Adjustable from Zero to Open-Loop" by Stephen Woodward, ED, June 4, 2001
8. "Bipolar Single-Supply Schmitt Trigger Extends DPM Range" by Andrea Sosso, ED, October 16, 2000
9. "Building the Analog Tool Kit", Signal Conditioning Seminar, Texas Instruments Publication, 2001
10. "Linear Applications Handbook, Volume III", Linear Technology Publication, 1997
11. "Digital Potentiometer Controls AGC Circuit" by Tavares, Tavares, and Piedade, EDN, August 3, 2000
12. "RTD Auto-nulling Delta-T Thermometer" by Stephen Woodward, ED, June 28, 1999
13. "IC Timer Cookbook" by Walter G. Jung, Howard Sams and Co.
14. LP2952/53 Voltage Regulator Data Sheets, National Semiconductor Publication

DPP is a trademark of Semiconductor Components Industries, LLC (SCILLC).

**ON Semiconductor** and **ON** are registered trademarks of Semiconductor Components Industries, LLC (SCILLC). SCILLC reserves the right to make changes without further notice to any products herein. SCILLC makes no warranty, representation or guarantee regarding the suitability of its products for any particular purpose, nor does SCILLC assume any liability arising out of the application or use of any product or circuit, and specifically disclaims any and all liability, including without limitation special, consequential or incidental damages. "Typical" parameters which may be provided in SCILLC data sheets and/or specifications can and do vary in different applications and actual performance may vary over time. All operating parameters, including "Typicals" must be validated for each customer application by customer's technical experts. SCILLC does not convey any license under its patent rights nor the rights of others. SCILLC products are not designed, intended, or authorized for use as components in systems intended for surgical implant into the body, or other applications intended to support or sustain life, or for any other application in which the failure of the SCILLC product could create a situation where personal injury or death may occur. Should Buyer purchase or use SCILLC products for any such unintended or unauthorized application, Buyer shall indemnify and hold SCILLC and its officers, employees, subsidiaries, affiliates, and distributors harmless against all claims, costs, damages, and expenses, and reasonable attorney fees arising out of, directly or indirectly, any claim of personal injury or death associated with such unintended or unauthorized use, even if such claim alleges that SCILLC was negligent regarding the design or manufacture of the part. SCILLC is an Equal Opportunity/Affirmative Action Employer. This literature is subject to all applicable copyright laws and is not for resale in any manner.

## PUBLICATION ORDERING INFORMATION

### LITERATURE FULFILLMENT:

Literature Distribution Center for ON Semiconductor  
P.O. Box 5163, Denver, Colorado 80217 USA  
**Phone:** 303-675-2175 or 800-344-3860 Toll Free USA/Canada  
**Fax:** 303-675-2176 or 800-344-3867 Toll Free USA/Canada  
**Email:** [orderlit@onsemi.com](mailto:orderlit@onsemi.com)

**N. American Technical Support:** 800-282-9855 Toll Free  
USA/Canada  
**Europe, Middle East and Africa Technical Support:**  
Phone: 421 33 790 2910  
**Japan Customer Focus Center**  
Phone: 81-3-5773-3850

**ON Semiconductor Website:** [www.onsemi.com](http://www.onsemi.com)  
**Order Literature:** <http://www.onsemi.com/orderlit>

For additional information, please contact your local Sales Representative